



# Shivam

**BAZAR-II**  
NARELA

A FREEHOLD PROJECT

In sync with sophistication  
a dynamic destination !

## Shivam Bazar-II

  
**CARAN d'ACHE**  
OF SWITZERLAND



LIC HOUSING FINANCE LTD.

**SWAROVSKI**



# Shivam BAZAR-II

(A FREEHOLD PROJECT)

Speedily emerging as one of the fastest developing sites in Northwest Delhi, Narela is poised to be the new hub of industrial, residential and commercial growth. The hectic pace of the industrial development along with the mushrooming of residential complexes have set the stage for Narela to make its mark on the map of Delhi.

After grand success of Shivam Plaza in Sector A-10, Narela, Shivam Group brings to you another mega-opportunity to join hands in the rapidly developing commercial real estate market- Shivam Bazar-I & Shivam Bazar-II.

## PRIME LOCATION

Strategically located in Narela, Shivam Bazar-II is surrounded by fully developed residential complexes.

The mall would also cater to the innumerable industries coming up in the vicinity. Its cool connectivity makes the location easily approachable.



# Shivam BAZAR-II

(A FREEHOLD PROJECT)

(L.S.C. Plot No. 7, Pkt.-02, Sector-A-9, Narela, Delhi)



- Three side open plot.
- Location on 40 mtr. Road.
- Surrounded by a large cluster of MIG-LIG & Expandable Flats.
- 1 km. (Approx. from Narela Sports Complex & Satyawadi Raja Harish Chandra Hospital).
- 1.25 km from Narela Industrial Area.



# UNMATCHED FEATURES

- 3-Sided Plot
- Earthquake Resistant Structure.
- Marble Flooring/Vitrified Tiles.
- All windows in Aluminium Frame.
- Ample Parking Space
- Payment in Interest Free Installments.
- Escalation Free Prices.
- Timely Completion of the Project.
- Freehold Project.

## Shivam Bazar-II



**Shivam**  
BAZAR-II



## SHOPPING - A Pleasure

Welcoming the futurising fashion trends, the shops in **Shivam Bazar-II** will take into consideration every conceivable need of clients. Each shopping spree is destined to be an enjoyment par excellence with unmatched services and unsurpassed facilities. The location is ideal for:

ATM's, Fast Food Joints, Departmental Stores, Baker & Confectionery Stores, Chemists & Druggists, Mobile Showrooms, Travel Agents and a plethora of services and product outlets.

The plethora of products at **Shivam Bazar-II** shall compliment the lifestyle needs of the residents and entrepreneurs visiting the complex.



## CORPORATE HUB

**Shivam Bazar-II** with its perfect planning and adequate infrastructure assures entrepreneurs of a wonderful working environment to promote their commercial aspirations. The corporate offices are glass fronted, spacious, tastefully designed with all modern amenities.

The working area initiates efficiency and energy in its occupants.

The complexes superlative designing is supported by a host of value added features, from ample parking space to piped music in the corridors, which energises the whole atmosphere.



**Shivam**  
BAZAR-II



# GROUP PROFILE

Founded as a real estate development company, primarily engaged in the development of multi-storied residential and commercial complexes, **Shivam** Group is fully geared to execute large scale turn-key projects. With a full fledged marketing team and highly skilled workforce, the group is growing from strength to strength.

Committed to providing exceptional value for money for its valuable customers, the company aspires to achieve all round growth and get recognition in the industry by building world class facilities of ever increasing quality and scope.

**Shivam**  
PLAZA-Rohini



Located in Sector 21, Rohini, **Shivam** Plaza has been a major milestone for the group. The project has seen tremendous response from customers seeking quality space options. With shops on ground floor and offices on upper floors, the project is going to be a star attraction.



**Shivam**  
PLAZA-Dwarka

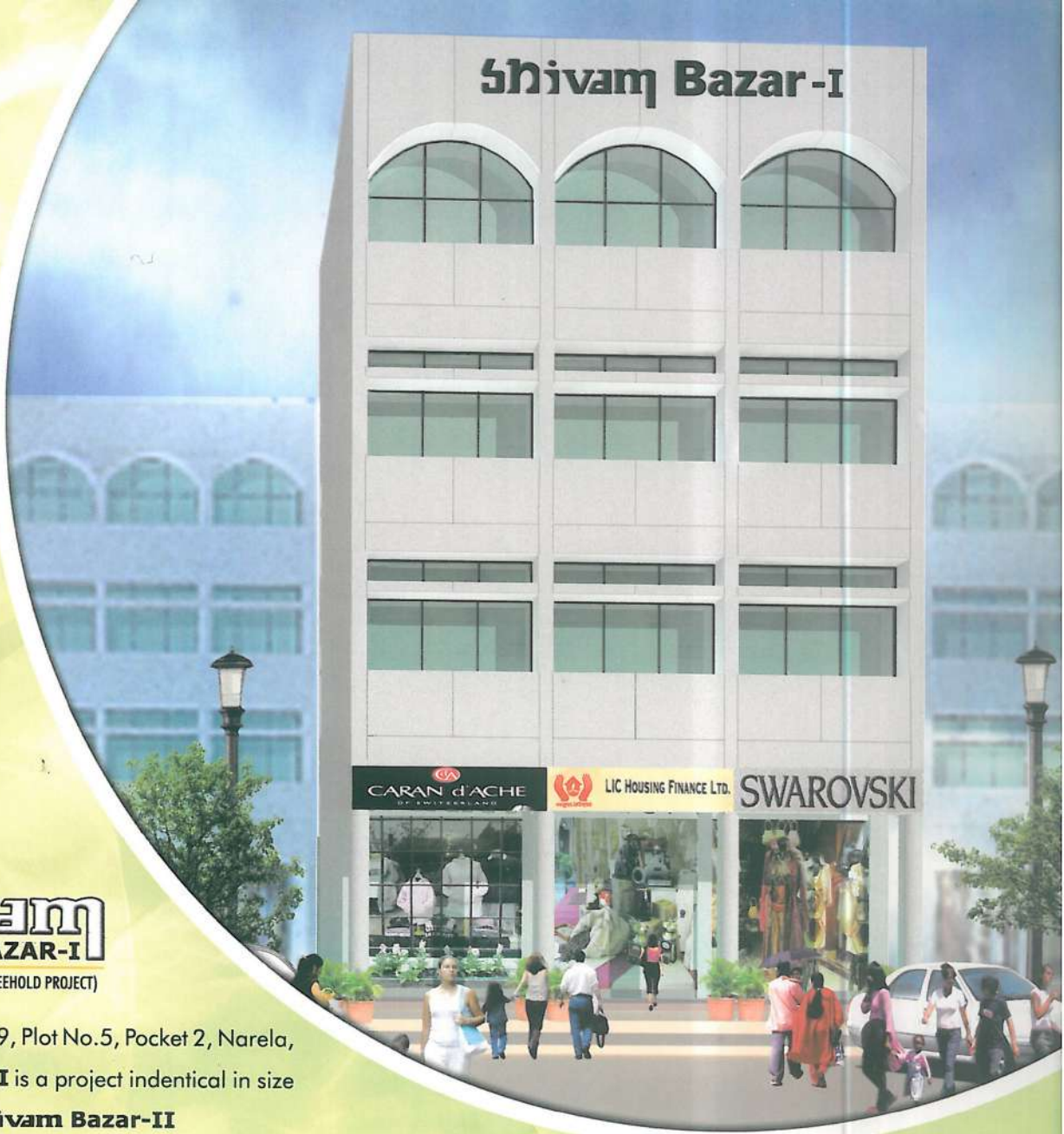
Coming up at a prime location in Sector 6, **Shivam** Plaza is a perfect example of the careful and meticulous planning the group undertakes before launching a project. Locational advantages, the right product mix to cater to the catchment area etc. are all taken care of.



**Shivam**  
PLAZA-Narela  
Sector A-10, Narela

As with all the group projects, strategic location and strong aesthetics have been the key to the mega success of this venture. With all the floors completely sold out within a few days from the launch, the project has seen remarkable appreciation in the prices and is a landmark for all builders and developers.

# Shivam Bazar-I



## Shivam BAZAR-I

(A FREEHOLD PROJECT)

Located in Sector A-9, Plot No.5, Pocket 2, Narela,  
**Shivam Bazar-I** is a project identical in size  
and features as **Shivam Bazar-II**

## UPCOMING PROJECT

**Shivam** City Mall, Sector-12, Huda, Panipat is upcoming shortly. It is situated on 64.00 meter wide road & is equipped with escalators & capsule lifts. It will be a fully air-conditioned shopping mall with food court and entertainment zone, with parking facility in basement.

## Shivam BAZAR-II

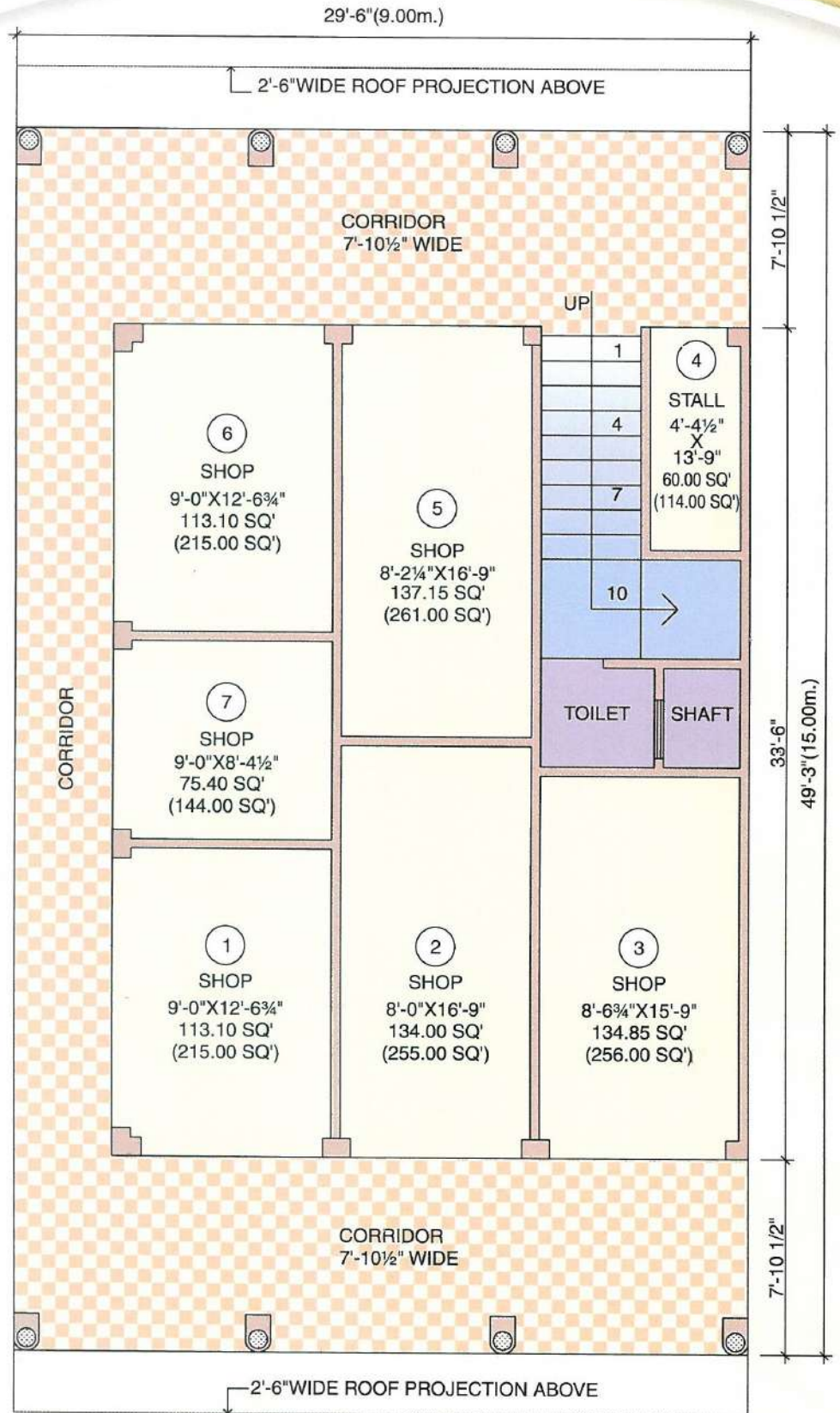
(A FREEHOLD PROJECT)

# GROUND FLOOR

SHOWING COVD. AREA / SUPER AREA

# Shivam

BAZAR-II



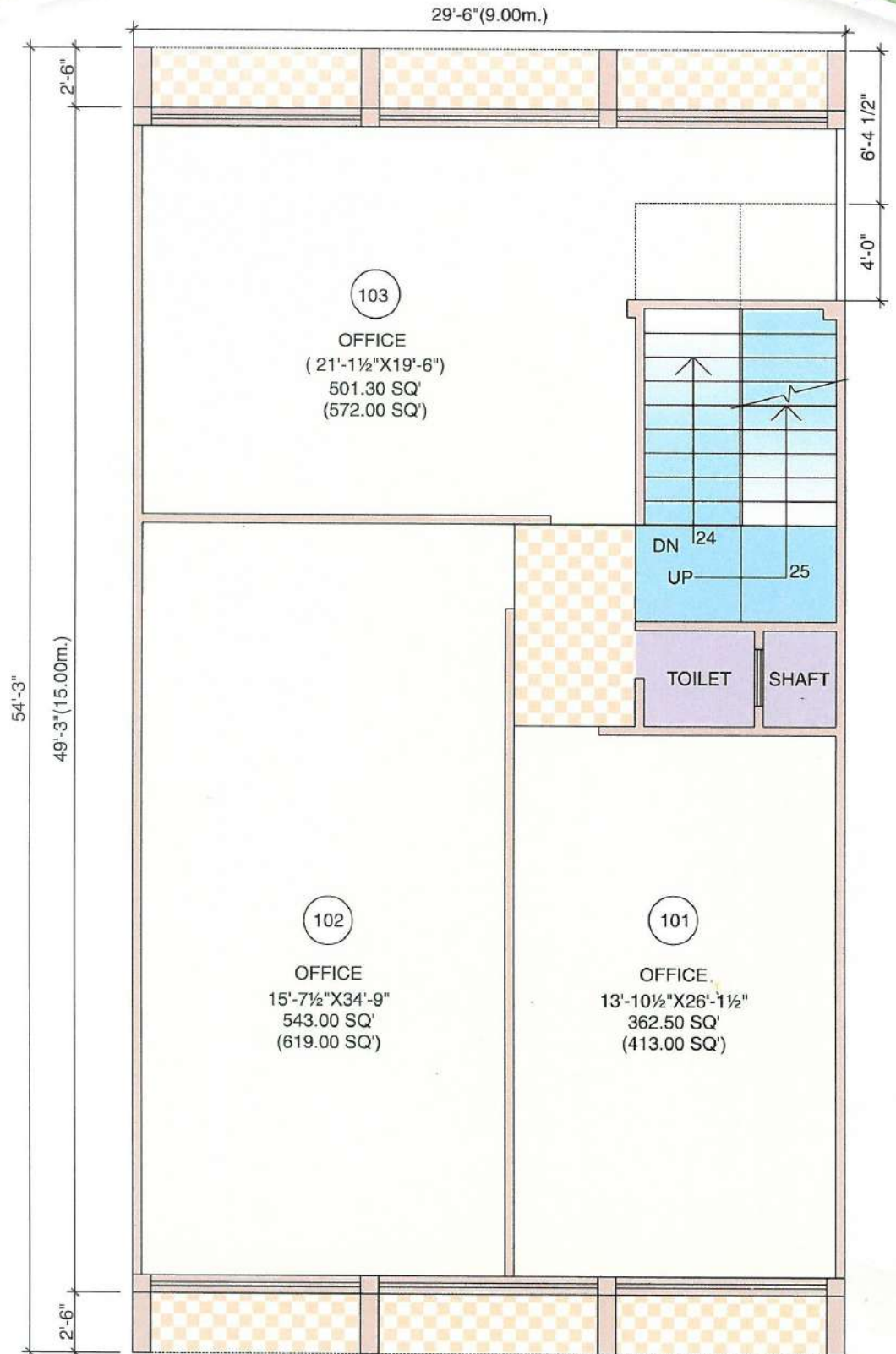


# FIRST FLOOR

SHOWING COVD. AREA / SUPER AREA

# Shivam

BAZAR-II

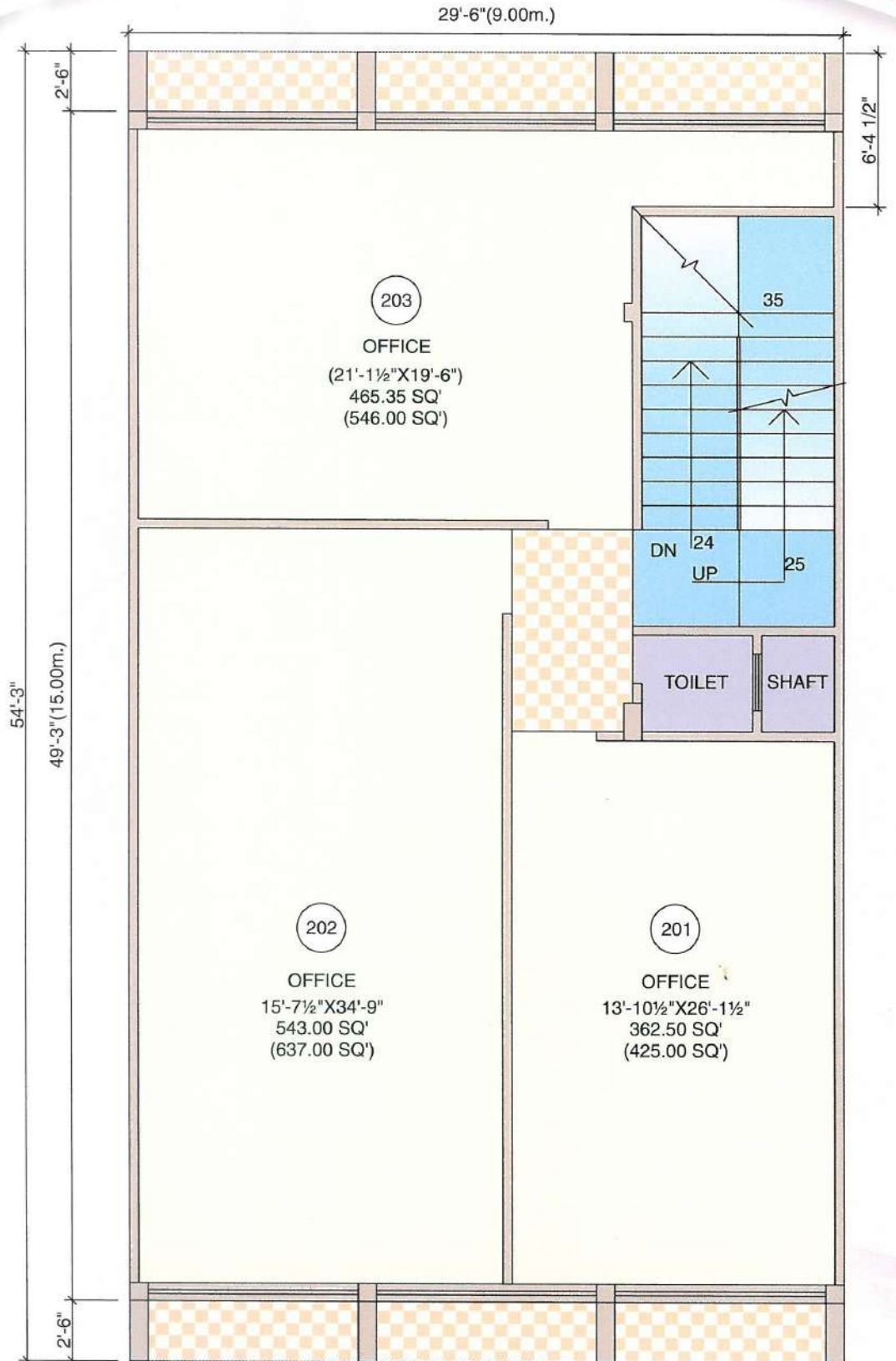


# SECOND FLOOR

SHOWING COVD. AREA / SUPER AREA

# Shivam

BAZAR-II

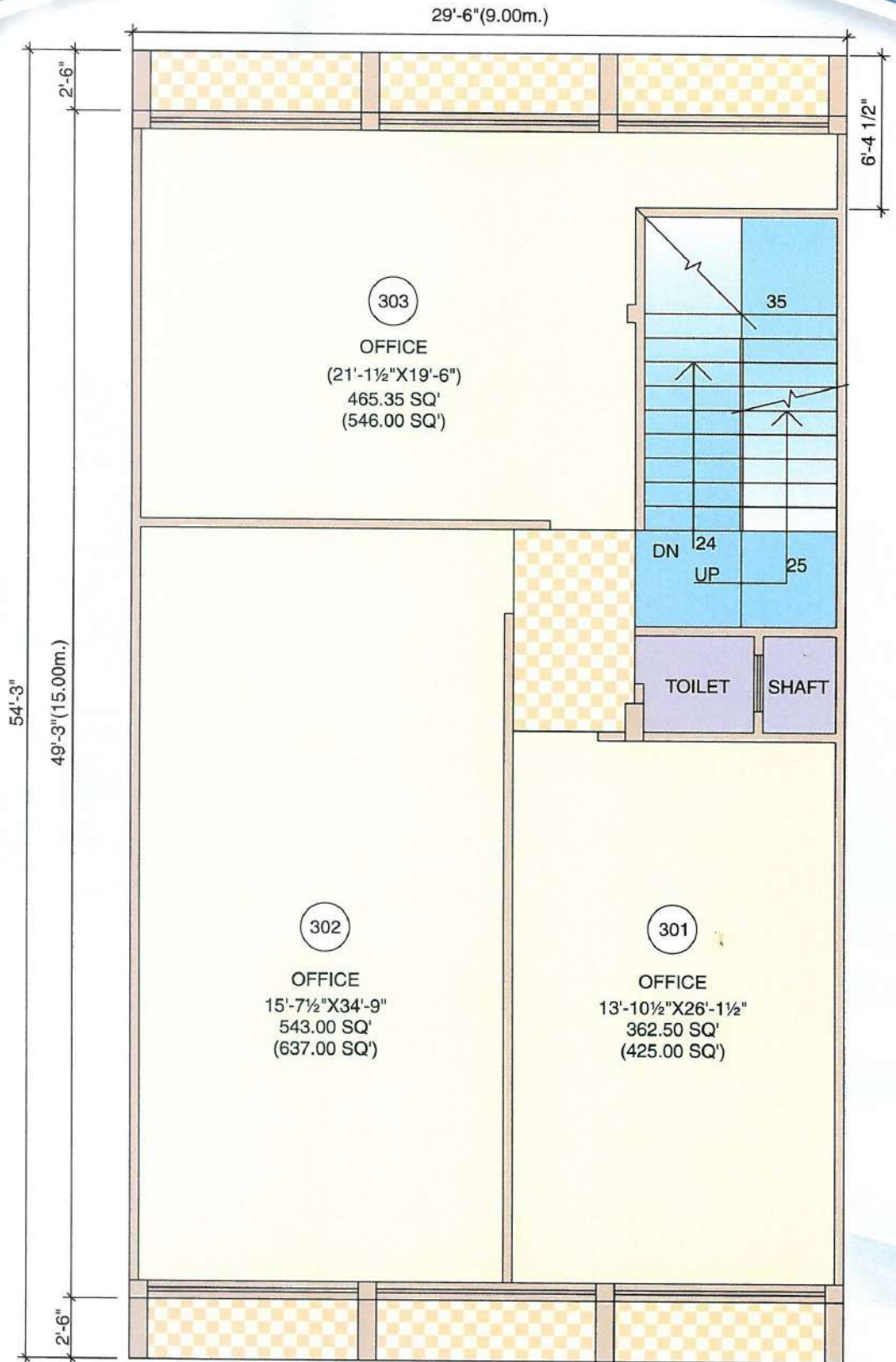


# THIRD FLOOR

SHOWING COVD. AREA / SUPER AREA

# Shivam

BAZAR-II





Promoters :

# shiv shakti BUILDTECH (P) LTD.

B-4/53-56, Sector-8, Rohini, Delhi-110085

Ph. : 27940493, 27940494, 27942042 Fax : 011 27940494

Cell. : 98111 36213, 98100 73016, 98103 75794, 98116 03339

Website : [www.shivamrealters.com](http://www.shivamrealters.com), [www.shivamgroup.in](http://www.shivamgroup.in)

Architect :

**SWASTIKI ASSOCIATES**  
37, Pocket-4, Sector-2, Rohini, Delhi-85